

# The Apple House Bacton

## Access statement

*A member of our family is disabled and we are aware of the problems this causes in properties that have not been adapted. We have attempted to provide for many of the needs of those who are less able.*

The address of the Apple House is

The Apple House, Pollard street, Bacton, Norwich, Norfolk NR12 0LF\*

*\*The post code allocated to the Apple House is NR12 0LB but that is much less precise than the above which is the post code for our house*

This statement cannot contain personal opinions as to suitability for those with access needs but aims to describe accurately the facilities we offer our guests. The Apple House is a converted barn and may not be suitable for every kind of disability.

### **Getting there**

Detailed directions are available. Please ask us if you have not received them. The Apple House is approached via a private road. Parking is off road. There is a gravel driveway and concrete hardstanding for 2 cars next to the short path leading to the Apple House (other parking is available if needed). There is plenty of room to access 2 cars parked side by side (see photograph)



## **Access to the house**

From the concrete hardstanding there is a short flagstone path leading to the Apple House patio. A ramp (width 47 inches) leads up to the entrance to the house. This is suitable for wheelchairs and small mobility scooters. There are also steps up to the house with a wrought iron hand rail.



## **Internal**

The entrance door is 33 inches wide. Other internal doors have a minimum width of 31 inches.

There is a small lip at the entrance (about 1 inch). This leads to the conservatory/sun room which in turn leads to the main entrance hallway. This hall way is spacious and has only small items of furniture in it.

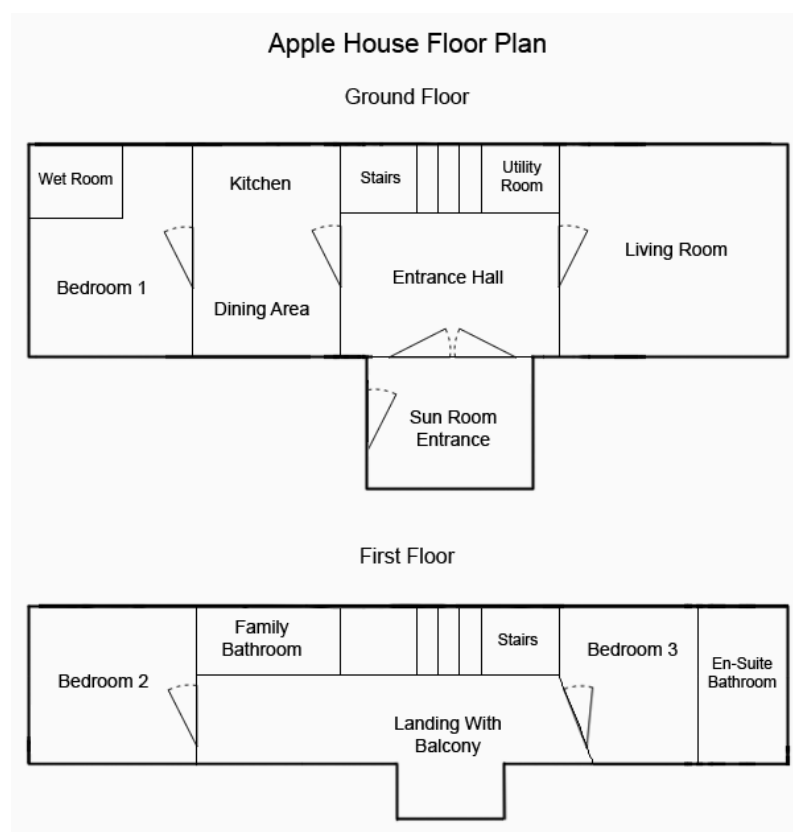
The entire ground floor is on one level.

The first floor is accessible only by stairs.

There is a toilet/utility room on the ground floor (leading from the main entrance hall).

The whole house has gas fired central heating.

## Floor Plan *(not to scale)*



### **Living room**

The living room is large. Furniture can be moved to suit wheel chair users. The living room is part heated by a log effect Franco Belge stove. This can be operated and adjusted by a remote controller. There is a widescreen television in the living room and a BluRay/ DVD player, both of which are operated by remote controls.

There is an electrically controlled rise and recline arm chair in the living room.

### **Kitchen/dining area.**

Units and work surfaces are standard height, but the refrigerator and Dishwasher are low level. The kitchen has some disability aids..

Wheelchair access can be had to the dining table.

### **Downstairs bedroom (bedroom 1)**

This bedroom (beyond the kitchen) has a double adjustable bed and a single bed in it. This enables a carer (or another guest) to sleep in the single bed and the person with disabilities to use the double bed.

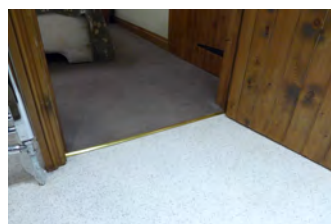
There is also an electrically controlled rise and recline armchair in this bedroom. This can be moved into the entrance hallway or down beside the single bed if more space is needed.

There is a clear area between the doorway and the double bed (measuring approximately 7ft 6 inches by 8ft 6 inches) for manoeuvrability. See photo



Between the foot of the double bed and the wall there is access to the wet room/shower (clear width in excess of 3 feet). The door to the wet room opens inwards and the width of the opening is 31 inches (2ft 7inches).

There is no change in level between the bedroom and the wet room (but there is a slight lip where the carpet ends and the wet room begins - see photo)



The double bed itself is height adjustable (head and foot) by a remote control. We can also raise the whole bed using "Elephant" feet so as to facilitate the use of a hoist if needed.

The bedside lights are touch activated.

We can provide if requested a Bed rail (one side of the bed only) which fits under the mattress and provides some support.

Off this bedroom there is an ensuite wet room with shower stool, grab rails and a fold down toilet support rail. We can provide a wheeled shower chair (with commode facility if needed).



The shower can be operated from outside the wet room (so as to allow it to reach the correct temperature before entering).

In keeping with all bedrooms in the Apple House it has a television and a dvd player both of which can be operated by remote control. The room also has a dressing table, chest of drawers, built in wardrobe at the rear, a dressing table, bedside tables (2) for the double bed and (1) for the additional bed;

Furniture can be moved to suit guests' needs.

There is no hoist but we there are local suppliers of disability aids who might be able to assist.